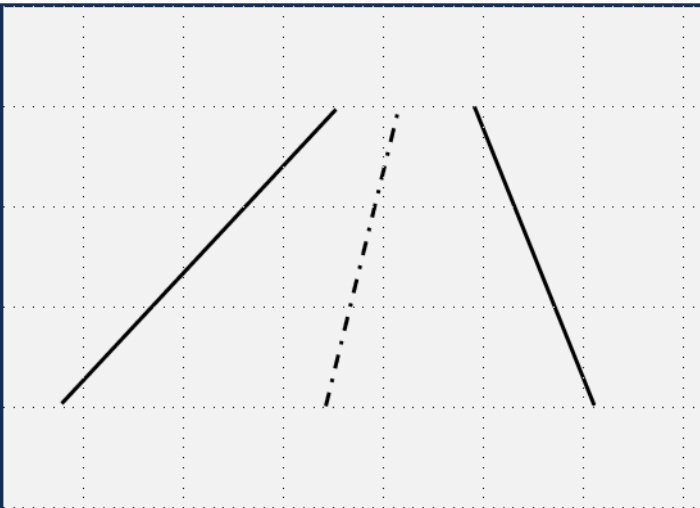


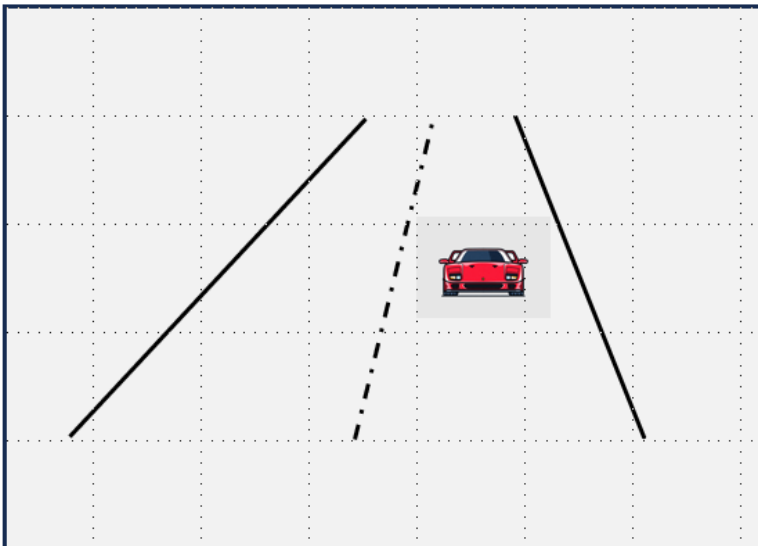
### Industrial Inspection

- Count number of objects
- Detect foreign object
- Classify object according to
  - Colour
  - Shape



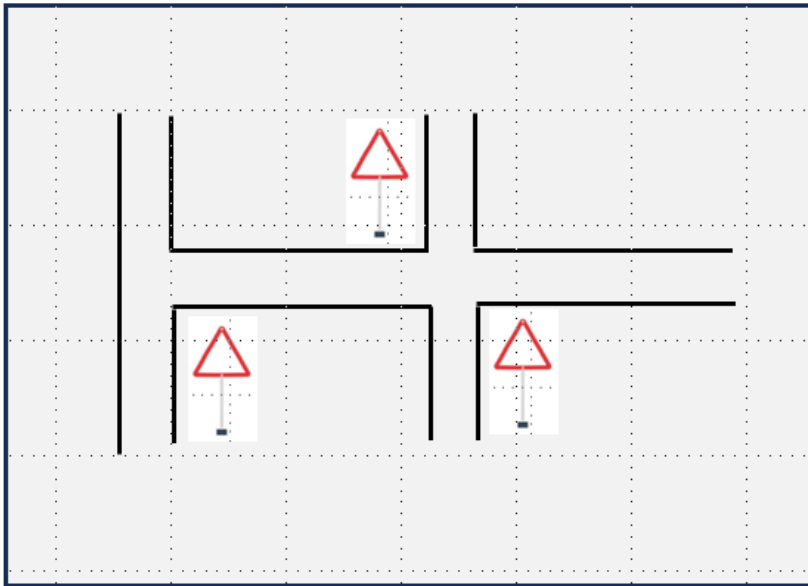
### Drive along a road

- Not simple error detection
- Uses edges of road
- Could use centre line
- Thoughts:
  - Colour of line?
  - Country roads with no lines



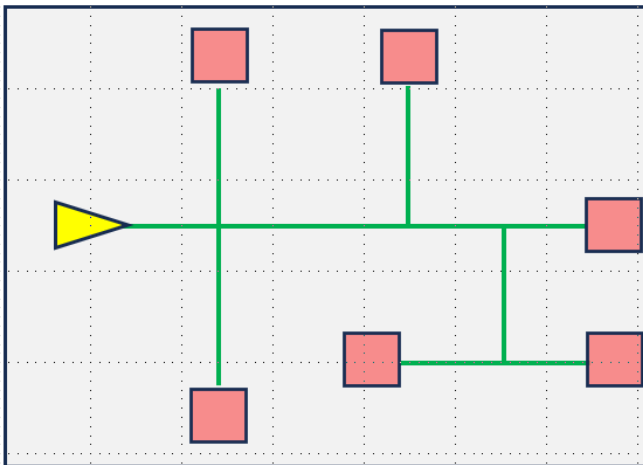
### Track a moving object

- Follow it around
- Remain at safe distance
- Does not *need* a road



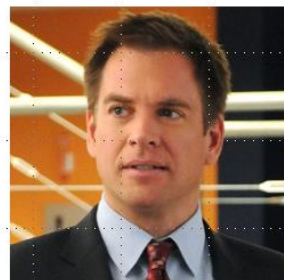
### Drive along a road

- Respond to road signs
- Plan journey
- How to stay on road?



### Fulfilment Centre

- Plan journey to pick up a list of objects
- Junction detection
  - Built-in Pixy?
  - Pixy bar-codes?
  - Husky somehow?
- How to stay on track (if need to)?



### HuskyLens Face recognition

- Repeat recognition of one face
- Discriminate between faces
- Recognize a photo of a real person
- Train to recognize other things
  - Text (newspaper headlines)

